

PRINT DIST
SCALE DIMENSIONS IN MM. DO NOT SCALE PRINT
METRIC
NUMBER C-177900
三尖線 (3-φ) ANGLE PROJECTION

ロックタイプ II
LOCK TYPE II

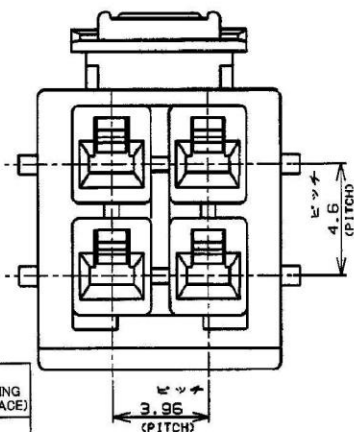
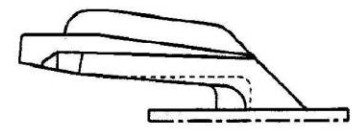
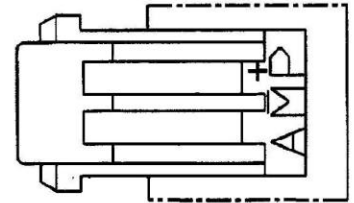
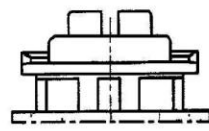


表1 (TABLE 1)

トレードマーク (TRADE MARK)	生産場所 (MANUFACTURING PLACE)
—AMP OR AMP	日本 (JAPAN)
—+AMP OR AMP	中国 (CHINA(PCR))
—AMP OR AMP	韓国 (KOREA)

NOTES,

1. PRODUCT SPEC, :108-5410
2. APPLICABLE CONTACT P/N
REC CONTACT, 177915-□ (*20- *16AWG)
177914-□ (*26- *22AWG)
3. MATING CONN, P/N
CAP HSG, 177908-□ (PANEL MOUNT)
TAB CONTACT, 177917-□ (*20- *16AWG)
177916-□ (*26- *22AWG)
4. APPLICABLE PLATE P/N, 177918-□
5. INSTRUCTION SHEET : 411-5638

SEE TABLE 1

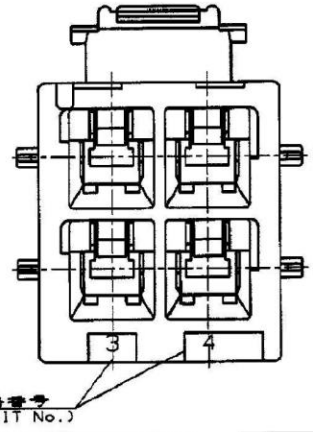
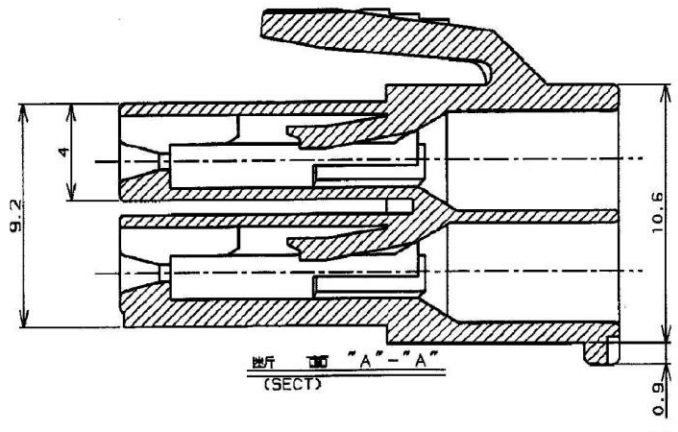
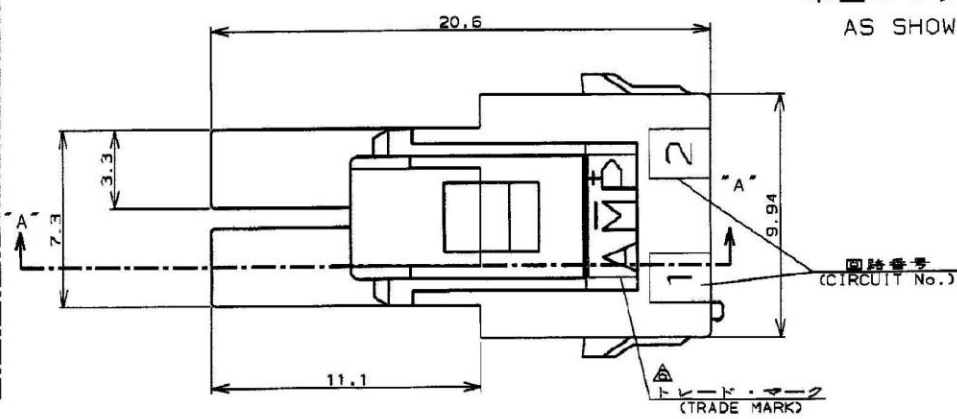
7. ALL PARTS MEET RTI ELECTRICAL RATING OF 105C ACCORDING TO UL 1977
8. PART 5-177900-1 COMPLY WITH GLOW WIRE REQUIREMENT FOR PARTS OF NON-METALLIC MATERIAL SUPPORTING A CURRENT-CARRYING CONNECTION DETAILED IN IEC 60335-1, SECTION 30 (GWT)
9. APPLICATION SPEC: 114-5175

F4	REVISED PER ECR-19-017851	SM	DZ	20NOV 2019
F3	REVISED PER ECR-14-001994	AZ	D. Z	11FEB 2014
F2	REVISED PER ECR-12-019929	AZ	FM	16NOV 2012
F1	REVISED PER ECO-11-005140	RK	HMR	01APR 2011
LTR	変更 (REVISION RECORD)	DR	CHK	DATE

ロックタイプ II LOCK TYPE II	自然色 (NATURAL)	4	3-177900-1
ロックタイプ LOCK TYPE	ハウジング色調 (HOUSING COLOR)	極数 (Pos.)	型番 (P/N)

適合電線範囲 (WIRE RANGE)	適合外径 (INSULATION DIA.)	名称 (NAME)
—mm (AWG —)	—mm	AMP POWER DOUBLE LOCK CONN.
材料 (MATERIAL)	仕上 (FINISH)	4極 3.96mmピッチ プラグ・ハウジング (2列タイプ)
6/6 ナイロン (UL94V-0) 6/6 NYLON (UL94V-0)	—	AMP POWER DOUBLE LOCK CONN. 3.96mm PITCH PLUG HOUSING 4 Pos (DBL ROW)
DR. M. SUZUKI	DE. M. SUZUKI	—
CHK. M. SHINDO	APP. Y. KASHIWA	—

本図ロックタイプ I を示す
AS SHOWN LOCK TYPE I



ロックタイプ I LOCK TYPE I	自然色 (NATURAL)	4	5-177900-1
ロックタイプ LOCK TYPE	ハウジング色調 (HOUSING COLOR)	極数 (Pos.)	型番 (P/N)

TE Connectivity

SIZE	LOC	番号 (No.)
A3	J	C-177900
尺度 (SCALE)	REV.	SHEET
F4		1 OF 1

Mouser Electronics

Authorized Distributor

Click to View Pricing, Inventory, Delivery & Lifecycle Information:

[TE Connectivity:](#)

[177900-1](#)